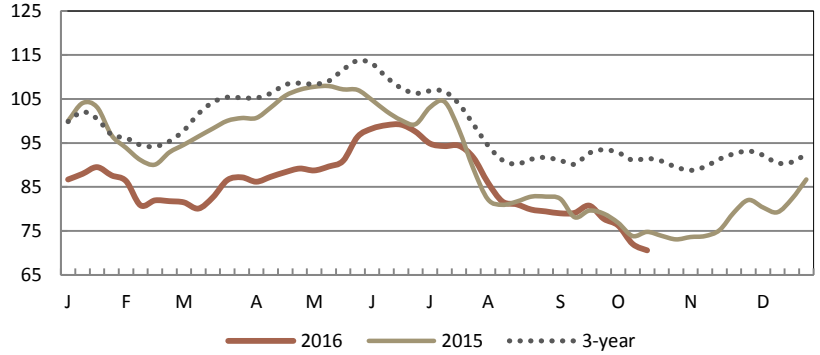




**NATIONAL COMPOSITE WEIGHTED AVERAGE**

	Wtd Avg	Change	1,000 lbs.
<b>This Week:</b>	70.59	↓ 1.45	12,551
<b>Last Week:</b>	72.04		12,485
<b>Last Year:</b>	74.79	↓ 4.20	13,000
<b>Monthly Composite Weighted Average</b>			
<b>Sep</b>	76.68		50,535



**BREAKOUT OF NATIONAL DATA**

	THIS WEEK				LAST WEEK	
	Price Range	Wtd Avg	Change	1,000 lbs.	Wtd Avg	1,000 lbs.
<b>WOGS:</b>						
Composite WOGS:	45.00 - 110.00	68.74	↓ -1.65	7,376	70.39	7,810
2.50 lbs and Lighter:	61.00 - 110.00	86.49	↓ -0.41	614	86.90	582
2.51 lbs to 3.50 lbs:	45.00 - 110.00	67.41	↓ -2.57	6,286	69.98	6,236
3.51 lbs and Heavier:	45.00 - 85.00	63.48	↑ 0.17	477	63.31	992
<b>Whole Birds:</b>						
Composite Whole Body:	42.00 - 110.00	73.23	↓ -1.64	5,175	74.87	4,674
3.00 lbs and Lighter:	51.00 - 88.00	71.22	↓ -3.80	647	75.02	397
3.01 lbs and Heavier:	42.00 - 110.00	73.51	↓ -1.34	4,528	74.86	4,277

**EASTERN REGION**

	THIS WEEK				LAST WEEK		
	Price Range	Majority	Wtd Avg	Change	1,000 lbs.	Wtd Avg	1,000 lbs.
Whole Body:	42.00 - 110.00	64.00 - 77.00	72.34	↓ 0.79	5,067	73.13	4,816
WOGS:	45.00 - 110.00	68.00 - 78.00	73.92	↑ 1.89	1,027	72.03	1,176
<b>NEW YORK</b>							
Whole Body:	60.00 - 77.00	64.00 - 77.00	67.65	↓ 0.30	1,251	67.95	1,268

**CENTRAL REGION**

	THIS WEEK				LAST WEEK		
	Price Range	Majority	Wtd Avg	Change	1,000 lbs.	Wtd Avg	1,000 lbs.
Whole Body:	45.00 - 109.00	53.00 - 67.00	63.68	↓ 2.37	4,377	66.05	4,323
WOGS:	45.00 - 109.00	53.00 - 65.00	61.10	↓ 2.98	3,497	64.08	3,563
<b>CHICAGO</b>							
Whole Body:	45.00 - 109.00	53.00 - 67.00	62.96	↓ 3.26	2,559	66.23	2,495

**WESTERN REGION**

	THIS WEEK				LAST WEEK		
	Price Range	Majority	Wtd Avg	Change	1,000 lbs.	Wtd Avg	1,000 lbs.
Whole Body:	49.00 - 104.00	75.00 - 84.00	77.48	↓ 0.74	3,107	78.22	3,346
WOGS:	49.00 - 104.00	75.00 - 84.00	76.25	↓ 0.73	2,852	76.98	3,071
<b>LOS ANGELES</b>							
Whole Body:	49.00 - 96.00	62.00 - 76.00	74.75	↓ 1.12	2,237	75.87	2,476

**EXPLANATORY NOTES**

Negotiated prices in trucklot and less-than-trucklot quantities of ready-to-cook whole body broiler/fryers delivered to first receivers; prices in cents per pound; volume in thousands of pounds.

**Eastern Region:** AL,CT,DE,FL,GA,MA,MD,ME,MS,NC,NH,NJ,NY,PA,RI,SC,TN,VT,VA,WV.

**Central Region:** AR,CO,IA,IL,IN,KS,KY,LA,MI,MN,MO,NE,NM,OK, OH,SD,TX,WI.

**Western Region:** AZ,CA,ID,MT,NV,OR,UT,WA,WY.